

KiCad

| REVISION HISTORY | | | |
|------------------|------|-------------|------|
| NUMBER | DATE | DESCRIPTION | NAME |
| | | | |

Contents

| | | |
|----------|---|-----------|
| 1 | Getting started | 1 |
| 1.1 | System Requirements | 1 |
| 1.2 | KiCad installation and upgrade | 1 |
| 2 | Installing and Upgrading KiCad | 4 |
| 2.1 | Importing settings | 4 |
| 2.2 | Migrating files from previous versions | 5 |
| 3 | KiCad user interface | 6 |
| 3.1 | Project settings | 6 |
| 3.2 | Project settings dialog | 6 |
| 3.3 | Side toolbar | 7 |
| 3.4 | Project settings dialog | 7 |
| 3.5 | Importing a project from another EDA tool | 8 |
| 4 | KiCad configuration | 9 |
| 4.1 | Common preferences | 10 |
| 4.2 | Mouse and touchpad preferences | 12 |
| 4.3 | Hotkey preferences | 13 |
| 4.4 | Advanced environment variables | 14 |
| 4.4.1 | Advanced environment variables | 15 |
| 4.5 | Libraries configuration | 15 |
| 5 | Project settings | 16 |
| 5.1 | Project settings dialog | 16 |
| 5.2 | Project settings dialog | 16 |
| 5.3 | Project settings dialog | 18 |
| 5.3.1 | Template example | 18 |
| 5.3.2 | Project settings dialog | 19 |
| 5.3.3 | Project settings dialog | 20 |
| 6 | Plugin and Content Manager | 21 |
| 7 | Actions reference | 22 |
| 7.1 | KiCad Project Manager | 22 |

リファレンス・マニュアル
 著作権

This document is Copyright © 2010-2021 by its contributors as listed below. You may distribute it and/or modify it under the terms of either the GNU General Public License (<http://www.gnu.org/licenses/gpl.html>), version 3 or later, or the Creative Commons Attribution License (<http://creativecommons.org/licenses/by/3.0/>), version 3.0 or later.

このガイドの中のすべての商&#x
 貢献者

Jean-Pierre Charras, Fabrizio Tappero, Jon Evans.

翻訳

Asuki Kono <asukiaaa AT gmail.com>, 2018. starfort <starfort AT nifty.com>, 2017-2019. Norio Suzuki <nosuzuki AT post-card.st>, 2015. yoneken <yoneken AT kicad.jp>, 2011-2015. silvermoon <silvermoon AT kicad.jp>, 2011-2015.

フィードバック

The KiCad project welcomes feedback, bug reports, and suggestions related to the software or its documentation. For more information on how to submit feedback or report an issue, please see the instructions at <https://www.kicad.org/help/report-an-issue/>

Chapter 1

Introduction

KiCad is an open-source software suite for creating electronic circuit schematics and printed circuit boards (PCBs). KiCad supports an integrated design workflow in which a schematic and corresponding PCB are designed together, as well as standalone workflows for special uses. KiCad also includes several utilities to help with circuit and PCB design, including a PCB calculator for determining electrical properties of circuit structures, a Gerber viewer for inspecting manufacturing files, and an integrated SPICE simulator for inspecting circuit behavior.

KiCad runs on all major operating systems and a wide range of computer hardware. It supports PCBs with up to 32 copper layers and is suitable for creating designs of all complexities. KiCad is developed by a volunteer team of software and electrical engineers around the world with a mission of creating free and open-source electronics design software suitable for professional designers.

The latest version of this documentation is available at <https://docs.kicad.org>.

1.1 System Requirements

KiCad is capable of running on a wide variety of hardware and operating systems, but some tasks may be slower or more difficult on lower-end hardware. For the best experience, a dedicated graphics card and display with 1920x1080 or higher resolution is recommended.

Please check the KiCad website for the latest system requirements: <https://kicad.org/help/system-requirements/>

1.2 KiCad File Formats

KiCad uses a variety of file formats to store project data. This section describes the most common file formats used by KiCad. The file formats are listed in the table below.

| | |
|-------------|--|
| *.kicad_pro | Project file, containing settings that are shared between the schematic and PCB |
| *.pro | Legacy (KiCad 5.x and earlier) project file. Can be read and will be converted to a <i>.kicad_pro</i> file by the project manager. |

The following table lists the file formats used by KiCad for schematic files.

| | |
|-------------|---|
| *.kicad_sch | Schematic files containing all info and the components themselves. |
| *.kicad_sym | Schematic symbol library file, containing the component descriptions: graphic shape, pins, fields. |
| *.sch | Legacy (KiCad 5.x and earlier) schematic file. Can be read and will be converted to a <i>.kicad_sch</i> file on write. |

| | |
|---------------|--|
| *.lib | Legacy (KiCad 5.x and earlier) schematic library file. Can be read but not written. |
| *.dcm | Legacy (KiCad 5.x and earlier) schematic library documentation. Can be read but not written. |
| *-cache.lib | Legacy (KiCad 5.x and earlier) schematic component library cache file. Required for proper loading of a legacy schematic (.sch) file. |
| sym-lib-table | Symbol library list (<i>symbol library table</i>): list of symbol libraries available in the schematic editor. |

基板エディターのファイルと&

| | |
|---------------|--|
| *.kicad_pcb | Board file containing all info but the page layout. |
| *.pretty | Footprint library folders. The folder itself is the library. |
| *.kicad_mod | Footprint files, containing one footprint description each. |
| *.kicad_dru | Design rules file, containing custom design rules for a certain .kicad_pcb file. |
| *.brd | Legacy (KiCad 4.x and earlier) board file. Can be read, but not written, by the current board editor. |
| *.mod | Legacy (KiCad 4.x and earlier) footprint library file. Can be read by the footprint or the board editor, but not written. |
| fp-lib-table | Footprint library list (<i>footprint library table</i>): list of footprint libraries available in the board editor. |
| fp-info-cache | Cache to speed up loading of footprint libraries. |

共通ファイル:

| | |
|-------------|---|
| *.kicad_wks | Page layout (drawing border and title block) description file |
| *.net | Netlist file created by the schematic, and read by the board editor. This file is associated to the .cmp file, for users who prefer a separate file for the component/footprint association. |
| *.kicad_prl | Local settings for the current project, helps Kicad remember the last used settings such as layer visibility or selection filter. May not need to be distributed with the project or put under version control. |

その他のファイル:

| | |
|-------|--|
| *.cmp | 回路図で使用しているがこのファイルを作成が取り込みます。例えば Pcbnew 上でフットプリントを変更コマンドでフットプリとします。この変更をで読み込みます。 Eeschema で読み込みます。 |
|-------|--|

その他のファイル:

次のファイルは製造や文書化で&

| | |
|-------|--|
| *.gbr | ガーバー・ファイル、製ドリル・ファイル(Excellon形形ポジション・ファイル(レポート・ファイル(アプロット・ファイル(postsript)プロット・ファイル(pdf形プロット・ファイル(svg形プロット・ファイル(dxf形プロット・ファイル(HPGL形& |
|-------|--|

Storing and and sending KiCad files

KiCad schematic and board files contain all the schematic symbols and footprints used in the design, so you can back up or send these files by themselves with no issue. Some important design information is stored in the project file (*.kicad_pro*), so if you are sending a complete design, make sure to include it.

Some files, such as the project local settings file (*.kicad_prl*) and the *fp-info-cache* file, are not necessary to send with your project. If you use a version control system such as Git to keep track of your KiCad projects, you may want to add these files to the list of ignored files so that they are not tracked.

Chapter 2

Installing and Upgrading KiCad

2.1 Importing settings

Each major release of KiCad has its own configuration, so that you may run multiple KiCad versions on the same computer without the configurations interfering. The first time you run a new version of KiCad, you will be asked how to initialize the settings:



If a previous version of KiCad is detected, you will have the option to import the settings from that version. The location of the previous configuration files is detected automatically, but you may override it to choose another location if desired.

Please note that, the schematic symbol and footprint library tables from the previous version of KiCad will **not** be imported.

You may also choose to start with default settings if you do not want to import settings from a previous version.

KiCad stores the settings files in a folder inside your user directory. Each KiCad version will store its settings in a subfolder of that folder (except for KiCad 5.1 and earlier, which did not use subfolders). Those folders are:

| | |
|---------|---|
| Windows | %APPDATA%\kicad |
| Linux | ~/.config/kicad |
| Mac OS | /Users/<username>/Library/Preferences/kicad |

2.2 Migrating files from previous versions

Modern versions of KiCad can open files created in earlier versions, but can only write files in the latest formats. This means that in general, there are no special steps to migrate files from a previous version besides opening the files. In some cases, the file extension for a file has changed from one KiCad version to the next. After opening these files, they will be saved in the new format with the new file extension. The old files will not be deleted automatically.

In general, files created or modified by one version of KiCad **cannot** be opened by older versions of KiCad. For this reason, it is important to keep backup copies of your projects when testing a new KiCad release, until you are confident that you will not need to use the older KiCad version anymore.

Note

Hotkey configurations are not imported from previous versions at this time. You can manually import hotkey configurations by copying the various `*.hotkeys` files from the old version configuration directory to the new one. If you do so, please note that KiCad will not automatically detect conflicts such as one key being assigned to multiple actions.

Chapter 3

KiCad

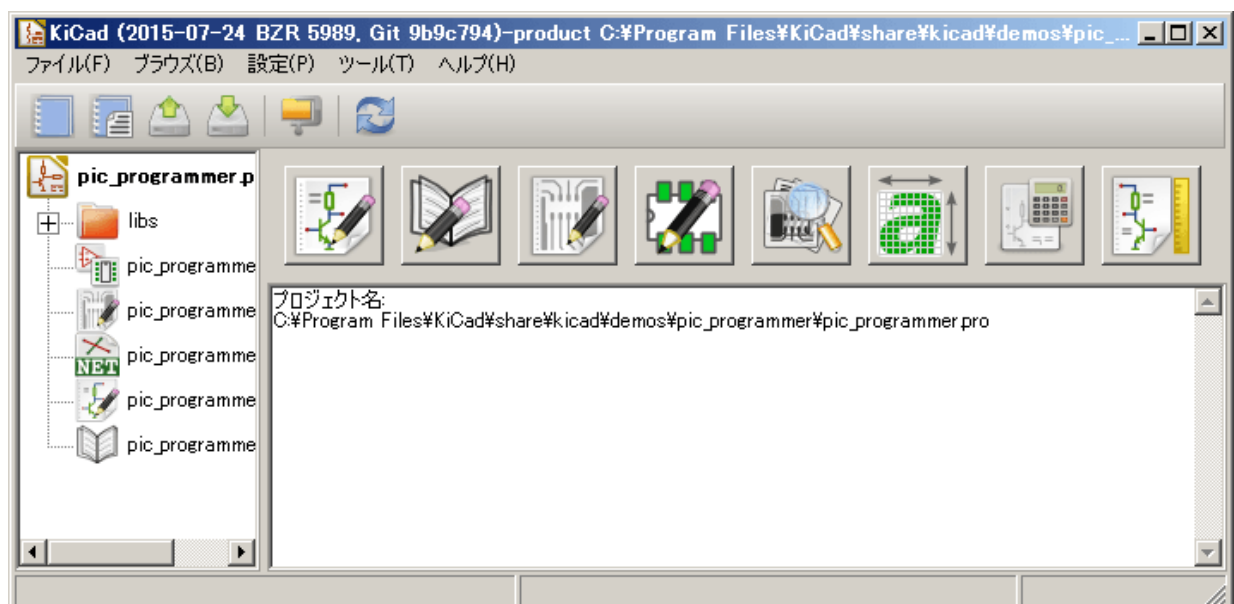
KiCad project manager (kicad or kicad.exe) is a tool which can easily run the other tools (schematic and board editors, Gerber viewer and utility tools) when creating a design.

KiCad

- synchronization of the design between the schematic editor and board editor (without creating netlist files)

KiCad currently only supports having one project open at a time. When running the schematic and board editors from the KiCad project manager, you can only edit the schematics and board associated with the open project. When these tools are run in *stand alone* mode, you can open any file in any project, but cross probing between tools can give strange results.

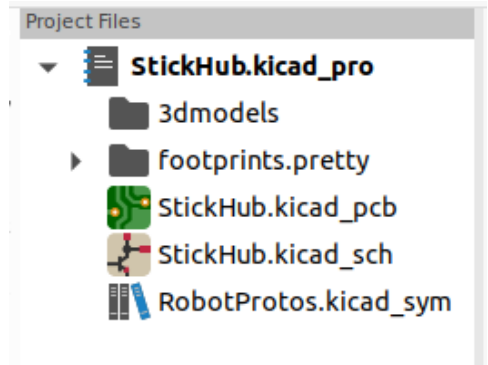
3.1



The KiCad project manager window is composed of a tree view on the left showing the files associated with the open project, and a launcher on the right containing shortcuts to the various editors and tools.

3.2 Project Files

The tree view shows a list of files inside the project folder. Double-clicking on a file in the tree view will open it in the associated editor. Right-clicking on a file will open a context menu with some file manipulation commands.



Note

Only files that KiCad understands how to open are displayed in the project tree view.

3.3 Side toolbar

The toolbar on the left side of the window provides shortcuts for common project operations:

| | |
|--|---|
| | Create a new project. |
| | Open an existing project. |
| | Create a zip archive of the whole project. This includes schematic files, libraries, PCB, etc. |
| | Extract a project zip archive into a directory. Files in the destination directory will be overwritten. |
| | Refresh the tree view, to detect changes made on the filesystem. |
| | Open the project working directory in a file explorer. |

3.4 Creating a New Project

Most KiCad designs start with the creation of a project. There are two ways to create a project from the KiCad project manager: you may create an empty project, or create a project based on an existing template. This section will cover the creation of a new, empty project. Creating projects from templates is covered in the [Project Templates](#) section.

To create a new project, use the **New Project...** command in the **File** menu, click the **New Project** button in the top toolbar, or use the keyboard shortcut (**Ctrl+N** by default).

You will be prompted for a name to give your project. By default, a directory will be created for your project with the same name. For example, if you enter the name `MyProject`, KiCad will create the directory `MyProject` and the project file `MyProject/MyProject.kicad_pro` inside it.

If you already have a directory to store your project files in, you can uncheck the *Create a new directory for the project* checkbox in the **New Project** dialog.

Note

It is strongly recommended that you store each KiCad project inside its own directory.

Once you select the name of your project, KiCad will create the following files inside the project directory:

| | |
|-------------------|-----------------------------|
| example.kicad_pro | KiCad project file. |
| example.kicad_sch | Main schematic file. |
| example.kicad_pcb | Printed circuit board file. |

3.5 Importing a project from another EDA tool

KiCad is able to import files created by some other software packages. Currently the following types of project are supported:

| | |
|--------------|---------------------------------|
| *.sch, *.brd | Eagle 6.x or newer (XML format) |
| *.csa, *.cpa | CADSTAR archive format |

To import a project from one of these tools, choose the appropriate option from the **Import Non-KiCad Project** submenu of the **File** menu.

You will be prompted to select either a schematic or a board file in the import file browser dialog. The imported schematic and board files should have the same base file name (e.g. project.sch and project.brd). Once the requested files are selected, you will be asked to select a directory to store the resulting KiCad project.

Chapter 4

KiCad configuration

The KiCad preferences can always be accessed from the **Preferences** menu, or by using the hotkey (default `Ctrl+,`). The Preferences dialog is shared between the running KiCad tools. Some preferences apply to all tools, and some are specific to a certain tool (such as the schematic or board editor).

4.1 Common preferences



Accelerated graphics antialiasing: KiCad can use different methods to prevent aliasing (jagged lines) when rendering using a

graphics card. Different methods may look better on different hardware, so you may want to experiment to find the one that looks best to you.

Fallback graphics antialiasing: KiCad can also apply antialiasing when using the fallback graphics mode. Enabling this feature may result in poor performance on some hardware.

Text editor: Choose a text editor to use when opening text files from the project tree view.

PDF viewer: Choose a program to use when opening PDF files.

Show icons in menus: Enables icons in drop-down menus throughout the KiCad user interface.

Note

Icons in menus are not displayed on some operating systems.

Icon theme: Sets whether to use the icon theme designed for light window backgrounds or dark window backgrounds. The default setting of *Automatic* will choose the theme based on the lightness of the operating system window theme.

Icon scale: Sets the size of the icons used in menus and buttons throughout KiCad. Choose *Automatic* to pick an appropriate icon scale automatically based on your operating system settings.

Canvas scale: Sets the scale of the drawing canvas used in the KiCad editors. Choose *Automatic* to pick an appropriate canvas scale automatically based on your operating system settings.

Apply icon scaling to fonts: This setting will scale fonts used in the UI according to the icon scale setting. This is not needed for most users, but may improve the look of KiCad on certain Linux platforms when using a high-DPI display.

Warp mouse to origin of moved object: When enabled, the mouse cursor will be repositioned (warped) to the origin of an object when you start a move command on that object.

First hotkey selects tool: When disabled, pressing the hotkey for a command such as *Add Wire* will immediately start the command at the current cursor location. When enabled, pressing the hotkey the first time will just select the *Add Wire* tool but will not immediately begin a wire.

Remember open files for next project launch: When enabled, KiCad will automatically re-open any files that were previously open when a project is re-opened.

Auto save: When editing schematics and board files, KiCad can automatically save your work periodically. Set to 0 to disable this feature.

File history size: Configure the number of entries in the list of recently-opened files

3D cache file duration: KiCad creates a cache of 3D models in order to speed up the 3D viewer. You can configure how long to keep this cache before deleting old files.

Automatically backup projects: When enabled, KiCad projects will be archived to ZIP files automatically according to the settings below. The archives will be stored in a subfolder of the project folder. Backups are created when saving files in the project.

Create backups when auto save occurs: When enabled, a backup will be created every time an automatic file save occurs (if the backup is permitted by the settings below). This setting has no effect if the auto save interval is set to 0 (disabled).

Maximum backups to keep: When creating a new backup, the oldest backup file will be deleted to keep the total number of backup files below this limit.

Maximum backups per day: When creating a new backup, the oldest backup file created on the current day will be deleted to stay below this limit.

Minimum time between backups: If backup is triggered (for example, by saving a board file), the backup will not be created if an existing backup file is newer than this limit.

Maximum total backup size: When creating a new backup file, the oldest backup files will be deleted to keep the total size of the backup files directory below this limit.

Remember open files for next project launch: When checked, KiCad will re-open the schematic and board editor if they were open the last time you closed the project manager.

4.2 Mouse and touchpad preferences

The screenshot shows the 'Mouse and Touchpad' preferences window. On the left is a sidebar with three options: 'Common', 'Mouse and Touchpad' (which is highlighted with an orange background), and 'Hotkeys'. The main area is divided into three sections: 'Pan and Zoom', 'Drag Gestures', and 'Scroll Gestures'. In the 'Pan and Zoom' section, the checkbox 'Center and warp cursor on zoom' is checked, 'Use zoom acceleration' is unchecked, and there is a 'Zoom speed' slider. The 'Drag Gestures' section has three rows: 'Left button drag' set to 'Drag selected objects; other actions', 'Middle button drag' set to 'Pan', and 'Right button drag' set to 'Pan'. The 'Scroll Gestures' section has a table for 'Vertical touchpad or scroll wheel movement' with columns for movement direction and modifier keys (Ctrl, Shift, Alt). The table shows that zooming is done with the scroll wheel, while panning is done with the touchpad using Shift or Ctrl. At the bottom, there is an unchecked checkbox for 'Pan left/right with horizontal movement' and a 'Reset Mouse and Touchpad to Defaults' button.

| | – | Ctrl | Shift | Alt |
|-----------------|----------------------------------|----------------------------------|----------------------------------|-----------------------|
| Zoom: | <input checked="" type="radio"/> | <input type="radio"/> | <input type="radio"/> | <input type="radio"/> |
| Pan up/down: | <input type="radio"/> | <input type="radio"/> | <input checked="" type="radio"/> | <input type="radio"/> |
| Pan left/right: | <input type="radio"/> | <input checked="" type="radio"/> | <input type="radio"/> | <input type="radio"/> |

☐ Pan left/right with horizontal movement

Reset Mouse and Touchpad to Defaults

Center and warp cursor on zoom: When enabled, zooming using the hotkeys or mouse wheel will cause the view to be centered

on the cursor location.

Use zoom acceleration: When enabled, scrolling the mouse wheel or touchpad faster will cause the zoom to change faster.

Zoom speed: Controls how much the zoom changes for a given amount of scrolling the mouse wheel or touchpad. Use *Automatic* to set a default value depending on your operating system.

Automatically pan while moving object: When enabled, the view can be panned while moving an object by moving close to the edge of the canvas.

Auto pan speed: Controls how fast the canvas pans while moving an object.

Mouse buttons: You can set the behavior of dragging the middle and right mouse buttons to zoom the view, pan the view, or have no effect. You can also set the behavior of dragging the left mouse button depending on whether or not any objects are already selected in the editing canvas.

Note

The left mouse button is always used for selecting and manipulating objects.

Mouse wheel and touchpad scrolling: You can set the behavior of scrolling the mouse wheel or vertical motion of the touchpad while pressing certain modifier keys.

Pan left/right with horizontal movement: When enabled, you can pan the view using the touchpad or horizontal scroll wheel (if present on your mouse).

4.3 Hotkey preferences



You can use this dialog to customize the hotkeys used to control KiCad. The hotkeys in the *Common* section are shared between every KiCad program. Hotkeys for each specific KiCad program are shown when that program is running. You can assign the same hotkey to a different action in different KiCad programs (for example, the schematic editor and the board editor), but you cannot assign a hotkey to more than one action in the same program.

There are many available commands, and so not all of them have a hotkey assigned by default. You can add a hotkey to any command by double-clicking on the command in the list. If you choose a hotkey that is already assigned to a different command, you can choose to use that hotkey on your chosen command, which will remove the hotkey assignment from the conflicting command.

Changes that you have made to hotkey assignments are shown with a * character at the end of the command name. You can undo changes to a specific command by right-clicking that command and selecting *Undo Changes*, or you can undo all changes with the button below the command list.

Importing hotkeys

Hotkey preferences are stored in `.hotkeys` files in the KiCad settings directory (see the [Settings](#) section for information about where the settings directory is on your operating system). If you have configured KiCad hotkeys the way you like on one computer, you can transfer that configuration to another computer by importing the appropriate `.hotkeys` file(s).

4.4 環境変数とパス

環境変数は、KiCad の内部で定義され、プロジェクトの絶対パスに展開されます。例えば、`$(KICAD6_FOOTPRINT_DIR)/connect.pretty` は、`connect.pretty` フォルダ（フットプリントライブラリ）の現在のプロジェクトフォルダ内にあることを示します。

- Schematic symbol libraries
- Footprint libraries
- 3D models

例えば、`connect.pretty` フットプリントライブラリを使用する際、`KICAD6_FOOTPRINT_DIR` 環境変数を用いると、そのパスは `$(KICAD6_FOOTPRINT_DIR)/connect.pretty` と定義されます。

Preferences → **Configure Paths...** メニューから、一部の組み込み KiCad 環境変数のパスを定義し、必要に応じて独自の環境変数を追加して個人用のパスを定義できます。

KiCad 環境変数:

| | |
|-------------------------|---|
| KICAD6_3DMODEL_DIR | Base path of 3D models used in footprints. |
| KICAD6_3RD_PARTY | Location for plugins, libraries, and color themes installed by the Plugin and Content Manager . |
| KICAD6_FOOTPRINT_DIR | Base path of footprint library files. |
| KICAD6_SYMBOL_DIR | Base path of symbol library files. |
| KICAD6_TEMPLATE_DIR | Location of project templates installed with KiCad. |
| KICAD_USER_TEMPLATE_DIR | Location of personal project templates. |



Configure Paths dialog box settings are internal to KiCad and are not visible as environment variables outside of KiCad. They are stored in [KiCad's user configuration files](#).

Paths can also be set as environment variables outside of KiCad, which will override any settings in the user's configuration.

Note

You cannot override an environment variable that has been set outside of KiCad by using the Configure Paths dialog. Any variable that has been set externally will be shown as read-only in the dialog.

Note also that the environment variable `KIPRJMOD` is **always** internally defined by KiCad, and expands to the **current project absolute path**.

For instance, `$(KIPRJMOD)/connect.pretty` is always the `connect.pretty` folder (the footprint library) inside the **current project folder**.

The `KIPRJMOD` variable cannot be changed in the Configure Paths dialog or overridden by an external environment variable.

4.4.1 Advanced environment variables

Some advanced environment variables can be set to customize KiCad's behavior. These variables are not shown in the environment variable configuration and cannot be used in path substitutions. They cannot be modified in the Configure Paths dialog, but they can be overridden by system environment variables.

Changing these variables will not result in KiCad moving any files from the default location to the new location, so if you change these variables you will need to copy any desired settings or files manually.

Additional environment variables:

| | |
|----------------------|---|
| KICAD_CONFIG_HOME | Base path of KiCad configuration files. Subdirectories will be created within this directory for each KiCad minor version. |
| KICAD_DOCUMENTS_HOME | Base path of KiCad user-modifiable documents, such as projects, templates, Python scripts, libraries, etc. Subdirectories will be created within this directory for each KiCad minor version. This directory is provided as a suggested user data location, but does not need to be used. |



Warning

If you modify the configuration of paths, please quit and restart KiCad to avoid any issues in path handling.

4.5 Libraries configuration

The **Preferences** → **Manage Symbol Libraries...** menu lets you manage the list of symbol libraries (**symbol library table**).

Likewise, use the **Preferences** → **Manage Footprint Libraries...** menu to manage the list of footprint libraries (**footprint library table**).

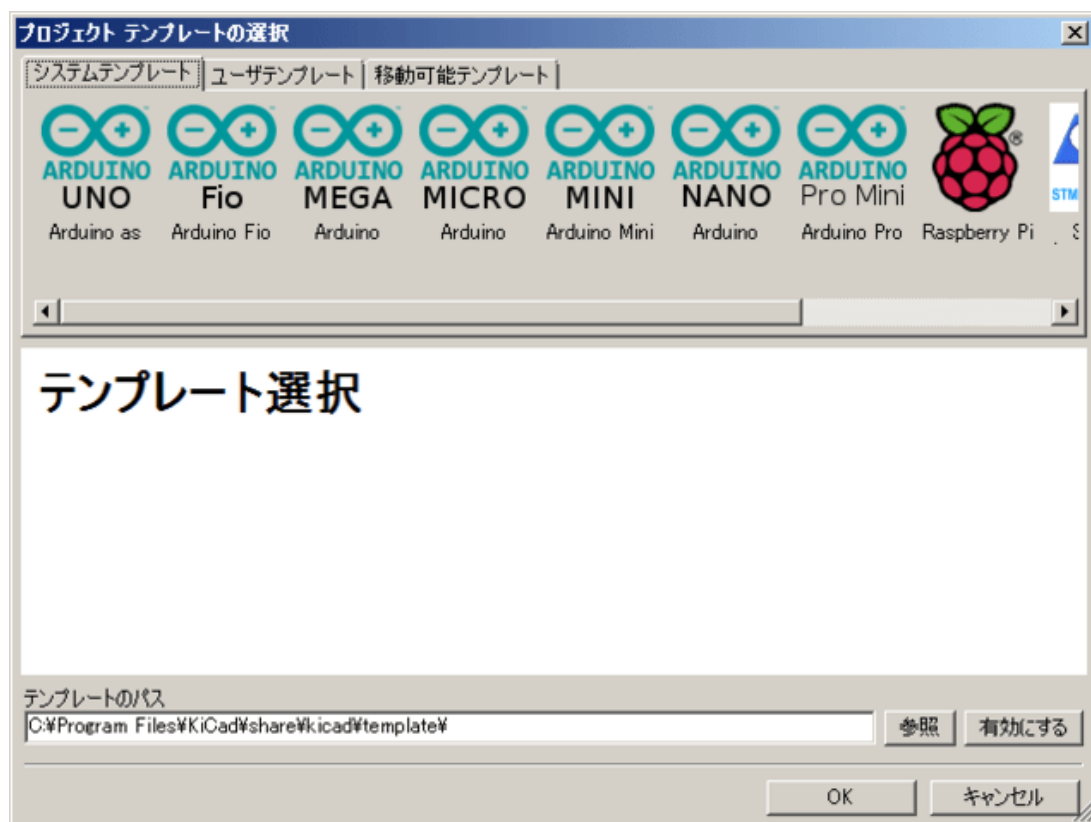
For each type of library (symbol and footprint), there are 2 library tables: global and project specific. The global library table is located in the [user configuration directory](#) and contains a list of libraries available to all projects. The project-specific library table is optional and contains a list of libraries specific to the project. It is located in the project directory.

Chapter 5

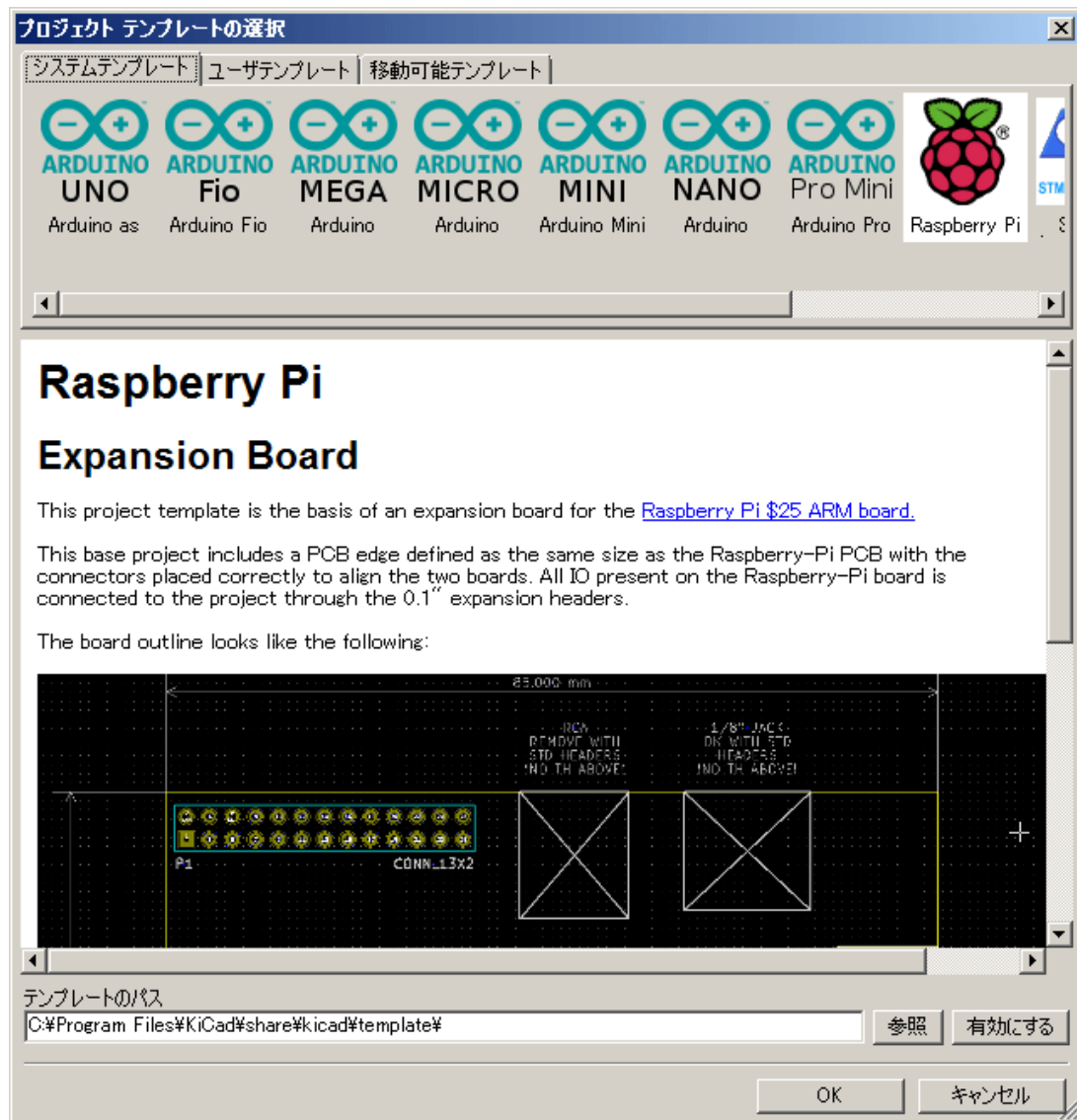
プロジェクテンプレートを使うことで、ファイル → 新࢟プロジェクト → テンプレートから新࢟プロジとメニューをたどって、プロテンプレートを選択すると:

5.1 テンプレートの使用

ファイル → 新࢟プロジェクト → テンプレートから新࢟プロジとメニューをたどって、プロテンプレートを選択すると:



テンプレート・アイコンのシテボタンをクリックすると新しテンプレートを選択すると:



5.2 環境変数とパス

KiCad のインストールディレクトリは、通常、以下のように設定されています。

- KICAD_USER_TEMPLATE_DIR: ユーザーテンプレートディレクトリ
 - KICAD_TEMPLATE_DIR: テンプレートディレクトリ
 - KICAD_BIN_DIR: KiCad の実行ファイルのディレクトリ
 - KICAD_LIB_DIR: ライブラリファイルのディレクトリ
- これらの環境変数は、以下のように設定されています。
- Unix: ~/kicad/template/
 - Windows: C:\Documents and Settings\username\My Documents\kicad\template or C:\Users\username\Documents\kicad\template
 - Mac: ~/Documents/kicad/template/

5.3

example.kicad_pro
 example.kicad_sch
 example.kicad_pcb
 example-first.kicad_sch
 second-example.kicad_sch
 third.kicad_sch
 third.kicad_pcb

All files and directories in a template are copied to the new project path when a project is created using a template, except **meta**. Files and directories containing the template name will be renamed with the new project file name.

For example, creating a project called **newproject** from a template named **example**:

| Files in template example directory | Files created in project newproject directory |
|--|--|
| example.kicad_pro | newproject.kicad_pro |
| example.kicad_sch | newproject.kicad_sch |
| example.kicad_pcb | newproject.kicad_pcb |
| example-first.kicad_sch | newproject-first.kicad_sch |
| second-example.kicad_sch | second-newproject.kicad_sch |
| third.kicad_sch | third.kicad_sch |
| third.kicad_pcb | third.kicad_pcb |

A template does not need to contain a complete project, if a required project file is missing, KiCad will create it using its default create project behavior:

| Files in template example directory | Files created in newproject directory |
|--|--|
| example.kicad_sch | newproject.kicad_sch |
| first-example.kicad_sch | first-newproject.kicad_sch |
| first-example.kicad_pcb | first-newproject.kicad_pcb |
| second-example.kicad_sch | second-newproject.kicad_sch |
| second-example.kicad_pcb | second-newproject.kicad_pcb |
| | newproject.kicad_pro (default) |
| | newproject.kicad_pcb (default) |

As an exception to the template name renaming rule, if one project file (.kicad_pro) exists and its name doesn't match the template name, KiCad will do the renaming based on that project file name instead:

| Files in template example directory | Files created in newproject directory |
|--|--|
| example.kicad_sch | example.kicad_sch |
| example.kicad_pcb | example.kicad_pcb |
| first-example.kicad_pro | newproject.kicad_pro |
| first-example.kicad_sch | newproject.kicad_sch |
| first-example.kicad_pcb | newproject.kicad_pcb |
| second-example.kicad_sch | second-example.kicad_sch |
| second-example.kicad_pcb | second-example.kicad_pcb |

Note

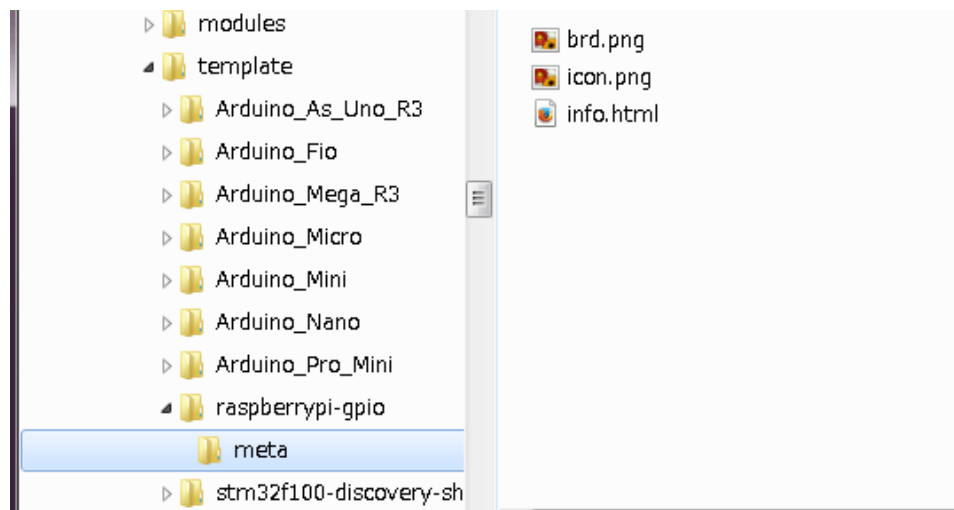
It is not recommended to create a template with multiple project files.

5.3.1 Template example

raspberry-gpio



そしてこれは、メタデータ・0



5.3.2 5.3.2 5.3.2 5.3.2 5.3.2

| | |
|----------------|--|
| meta/info.html | HTML フォーマットで書かれつ |
|----------------|--|

The <title> tag determines the actual name of the template that is exposed to the user for template selection. Note that the project template name will be cut off if it's too long.

HTML を使用することで、新しいf
HTML タグのみ使用できます。

これは **info.html** ファイルのサンプルに

```
<!DOCTYPE HTML PUBLIC "-//W3C//DTD HTML 4.0 Transitional//EN">
<HTML>
<HEAD>
<META HTTP-EQUIV="CONTENT-TYPE" CONTENT="text/html;
charset=windows-1252">
<TITLE>Raspberry Pi - Expansion Board</TITLE>
</HEAD>
```

```
<BODY LANG="fr-FR" DIR="LTR">
<P>This project template is the basis of an expansion board for the
<A HREF="http://www.raspberrypi.org/" TARGET="blank">Raspberry Pi $25
ARM board.</A> <BR><BR>This base project includes a PCB edge defined
as the same size as the Raspberry-Pi PCB with the connectors placed
correctly to align the two boards. All IO present on the Raspberry-Pi
board is connected to the project through the 0.1" expansion
headers. <BR><BR>The board outline looks like the following:
</P>
<P><IMG SRC="brd.png" NAME="brd" ALIGN=BOTTOM WIDTH=680 HEIGHT=378
BORDER=0><BR><BR><BR><BR>
</P>
<P>(c)2012 Brian Sidebotham<BR>(c)2012 KiCad Developers</P>
</BODY>
</HTML>
```

5.3.3

| | |
|---------------|-------------------------------|
| meta/icon.png | 64 x 64 PNG meta/info.html |
|---------------|-------------------------------|

meta/info.html

Chapter 6

Plugin and Content Manager

Note

TODO: Write this section

Chapter 7

Actions reference

Below is a list of every available **action** in the KiCad Project Manager: a command that can be assigned to a hotkey.

7.1 KiCad Project Manager

| Action | Default Hotkey | Description |
|--------------------------------|----------------|--|
| New Project. . . | kbd:[Ctrl+N] | Create new blank project |
| New Project from Template. . . | kbd:[Ctrl+T] | Create new project from template |
| Open Project. . . | kbd:[Ctrl+O] | Open an existing project |
| Open Demo Project. . . | | Open a demo project |
| Close Project | | Close the current project |
| Schematic Editor | kbd:[Ctrl+E] | Edit schematic |
| Symbol Editor | kbd:[Ctrl+L] | Edit schematic symbols |
| PCB Editor | kbd:[Ctrl+P] | Edit PCB |
| Footprint Editor | kbd:[Ctrl+F] | Edit PCB footprints |
| Gerber Viewer | kbd:[Ctrl+G] | Preview Gerber output files |
| Image Converter | kbd:[Ctrl+B] | Convert bitmap images to schematic or PCB components |
| Calculator Tools | | Run component calculations, track width calculations, etc. |
| Drawing Sheet Editor | kbd:[Ctrl+Y] | Edit drawing sheet borders and title block |
| Plugin and Content Manager | kbd:[Ctrl+M] | Manage downloadable packages from KiCad and 3rd party repositories |
| Open Text Editor | | Launch preferred text editor |